

# LabSpeed – Table Export to Oracle Database User Guide

## Overview

The **Table Export Oracle extension** adds the ability to export data from a LabSpeed Table View directly to an Oracle database.

The LabSpeed Table View provides a drag & drop mechanism for creating a flat table from relational instrument data. The columns in this table represent any subset of the available instrument data and may be arranged in any order. In addition, the table may be quickly rearranged in any of three distinct styles. Once setup, the data may be exported as Delimited Text, Excel (.xls) or to an Oracle database table. Exporting to an Oracle database requires an extension add-in be installed.

## Add-in Installation

The Table Export Oracle LabSpeed add-in installer may be obtained by visiting the Topos Technologies website at [www.topostech.com](http://www.topostech.com) and clicking on the *Feature Extensions* link. Download and run the ToposTableExportOracle.msi installer program and follow the directions.

When LabSpeed is next run, you will be directed to the Client Manager in order to add the new Table Export Oracle Feature Add-In to LabSpeed's client list.

## Oracle DB Connection

The Oracle connection parameters must be setup correctly. Ensure parameters are correct by choosing the menu *Tools->Client Connections*. This is where all the connections for all Clients are managed.

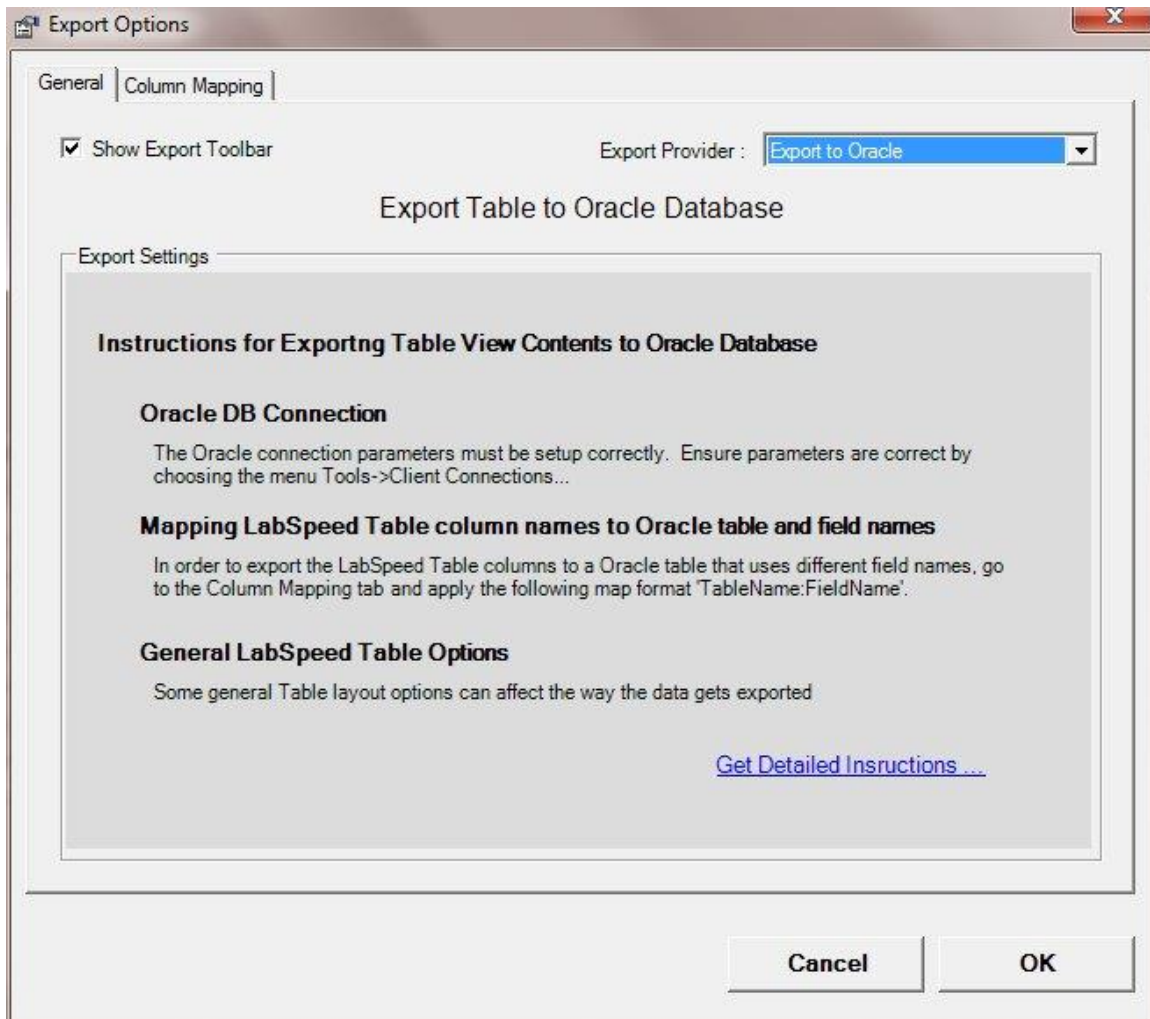
Select the Client "Topos : TableExport Oracle DB" and the connection named "Export Table to Oracle" and click *Edit*. Or create a new connection. Enter all required Oracle log on fields, including Server Name, User Name and Password. Test the connection to make sure it is valid and then save the connection to the same name (which overwrites the existing connection) or to a different name. If you save the connection to a different name, remember to make it the *Active Connection*.

## Table Export Oracle Setup

While in Table Designer view, click the Export toolbar button. The Table Designer Export dialog is where you choose the Oracle Export provider and setup column maps.

### ***The Table Export Oracle Provider***

On the General tab, select the Export to Oracle export provider. If it does not appear in the drop down list, it may need to be installed. The Export to Oracle option is a special LabSpeed Add-In feature.



General instructions appear describing the process of setting up for exporting to Oracle. In addition, a button is available for obtaining more detailed instructions.

## Mapping Table column names to Oracle field names

Each LabSpeed Table column that you wish to export must be mapped to the corresponding Oracle table column name.

On the Column Mapping tab, enter field names that map the Table column name to the Oracle table column name by applying the following rules:

1. Map format - TableName:FieldName. Leading and trailing spaces are not important and will be removed
2. Any mapped items that are not of the TableName:FieldName format will be ignored.
3. The same Table Name has to be used for all mapped items

For example, if the Oracle database table name is "Sample", the following maps might be applied:

Field Name	Map Name
SampleName	Sample:SampleName
AcquireDate	Sample:Date
SampleType	Sample:SampleType
User Name	Sample:Operator
SampleWeight	
InitialVolume	
FinalVolume	
CorrectionFactor	Sample:Factor
As1890	Sample:As
Ca3179	Sample:Ca
Ca3933	
Cu3247	Sample:Cu
Hg1849	Sample:Hg
K_7664	Sample:K
Mg2852	Sample:Mg
Na5889	Sample:Na
Na5895	
Pb2203	Sample:Pb

Show All Maps Field Types...

Cancel OK

## Other Mapping Rules

1. The table and mapped fields must exist in the Oracle Database. It does not matter if there are additional, unmapped database fields in the Oracle Table.
2. The Database column types must match the associated LabSpeed field data type. For example, if the LabSpeed data type is "Int32", then the Oracle table field must also be "Int32". However, any LabSpeed field type may be exported to a database string field. Click on the Field Types... button to view the LabSpeed exported fields and their Field Types.
3. If you wish to turn off the Table Option "Show duplicate primary labels", the primary columns in the Database must have the "allow null" column option checked.

Note: Changing the Table Style (*Standard*, *Value Type* and *Value Type Column*) will change the format of the table and result in more or fewer columns exported. This will affect maps as well.