

# LabSpeed – Table Export to Microsoft Access™ Database User Guide

## Overview

The **Table Export Access extension** adds the ability to export data from a LabSpeed Table View directly to a Microsoft Access database.

The LabSpeed Table View provides a drag & drop mechanism for creating a flat table from relational instrument data. The columns in this table represent any subset of the available instrument data and may be arranged in any order. In addition, the table may be quickly rearranged in any of three distinct styles. Once setup, the data may be exported as Delimited Text, Excel (.xls) or to an Access database table. Exporting to an Access database requires an extension add-in be installed.

## Add-in Installation

The Table Export to Access LabSpeed add-in installer may be obtained by visiting the Topos Technologies website at [www.topostech.com](http://www.topostech.com) and clicking on the *Feature Extensions* link. Download and run the ToposTableExportAccess.msi installer program and follow the directions.

When LabSpeed is next run, you will be directed to the Client Manager in order to add the new Table Export Access Feature Add-In to LabSpeed's client list.

## Access DB Connection

The Access connection parameters must be setup correctly. Ensure parameters are correct by choosing the menu *Tools->Client Connections*. This is where all the connections for all Clients are managed.

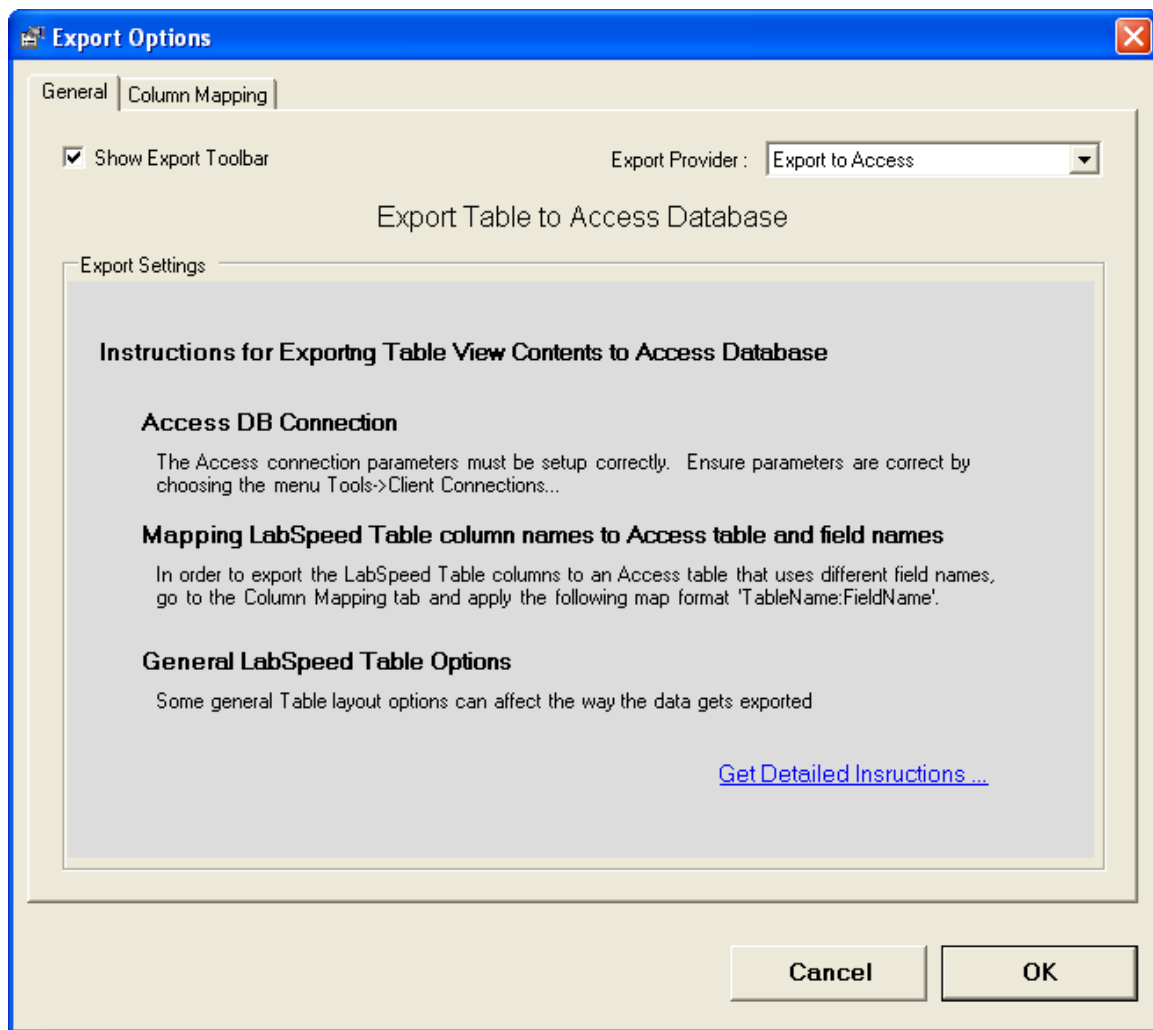
Select the Client "Topos : TableExportAccess" and the connection named "Access DB Connection" and click *Edit*. Or create a new connection. Enter all required Access log on fields, including Database Name, User Name and Password (if applicable). Test the connection to make sure it is valid and then save the connection to the same name (which overwrites the existing connection) or to a different name. If you save the connection to a different name, remember to make it the *Active Connection*. Once the connection parameters are modified, LabSpeed must be exited and re-run in order for the changes to take effect.

## Table Export Access Setup

While in Table Designer view, click the Export toolbar button. The Table Designer Export dialog is where you choose the Access Export provider and setup column maps.

### ***The Table Export Access Provider***

On the General tab, select the Export to Access export provider. If it does not appear in the drop down list, it may need to be installed. The Export to Access option is a special LabSpeed Add-In feature.



General instructions appear describing the process of setting up for exporting to Access. In addition, a button is available for obtaining more detailed instructions.

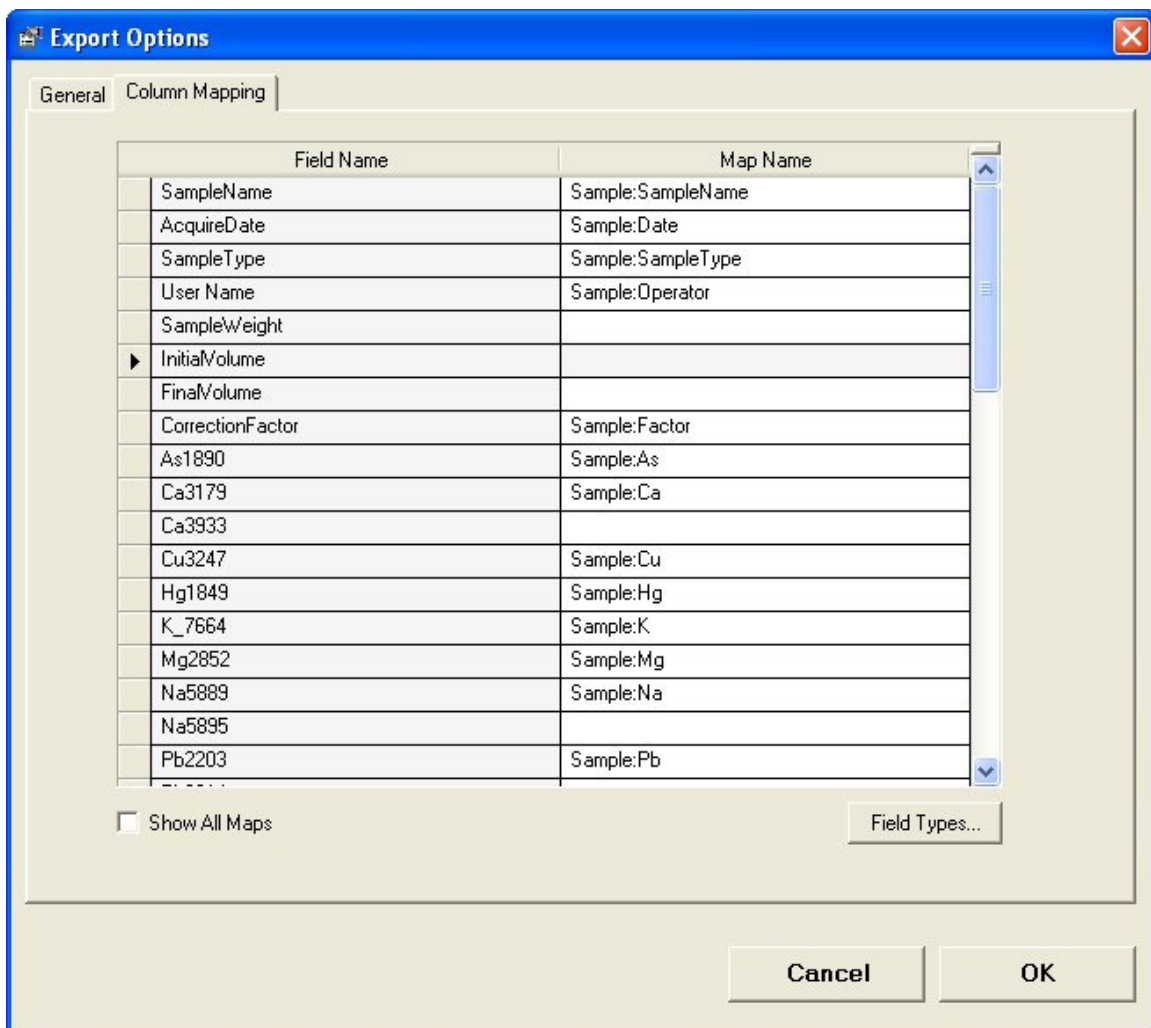
## Mapping Table column names to Access field names

Each LabSpeed Table column that you wish to export must be mapped to a corresponding Access table column name.

On the Column Mapping tab, enter field names that map the LabSpeed Table column name to the Access table column name by applying the following rules:

1. Map format - TableName:FieldName. Leading and trailing spaces are not important and will be removed
2. Any mapped items that are not of the TableName:FieldName format will be ignored.
3. The same Table Name has to be used for all mapped items

For example, if the Access database table name is "Sample", the following maps might be applied:



Field Name	Map Name
SampleName	Sample:SampleName
AcquireDate	Sample:Date
SampleType	Sample:SampleType
User Name	Sample:Operator
SampleWeight	
InitialVolume	
FinalVolume	
CorrectionFactor	Sample:Factor
As1890	Sample:As
Ca3179	Sample:Ca
Ca3933	
Cu3247	Sample:Cu
Hg1849	Sample:Hg
K_7664	Sample:K
Mg2852	Sample:Mg
Na5889	Sample:Na
Na5895	
Pb2203	Sample:Pb

Show All Maps      Field Types...

Cancel      OK

## Other Mapping Rules

1. The table and mapped fields must exist in the Access Database. It does not matter if there are additional, unmapped database fields in the Access Table.
2. The Database column types must match the associated LabSpeed field data type. For example, if the LabSpeed data type is "Int32", then the Access table field must also be "Int32". However, any LabSpeed field type may be exported to a database string field. Click on the Field Types... button to view the LabSpeed exported fields and their Field Types.
3. If you wish to turn off the Table Option "Show duplicate primary labels", the primary columns in the Database must have the "allow null" column option checked.

Note: Exporting the LabSpeed Table View contents will export the mapped rows as they are displayed in the LabSpeed Table View. Generally, the *Standard* table style is the best format to use for exporting. Changing the Table Style (*Standard*, *Value Type* and *Value Type Column*) will change the format of the table and may result in more or fewer columns exported. This will affect maps as well.