



LabSpeed

Database Import

User Guide

Topos Technologies

Overview

Database Import works as a companion to *the LabSpeed File Monitor Service*, which continuously monitors for new instrument-saved data and transfers it directly to the Topos SQL Server database. (see *LabSpeed File Monitor Service Guide*)

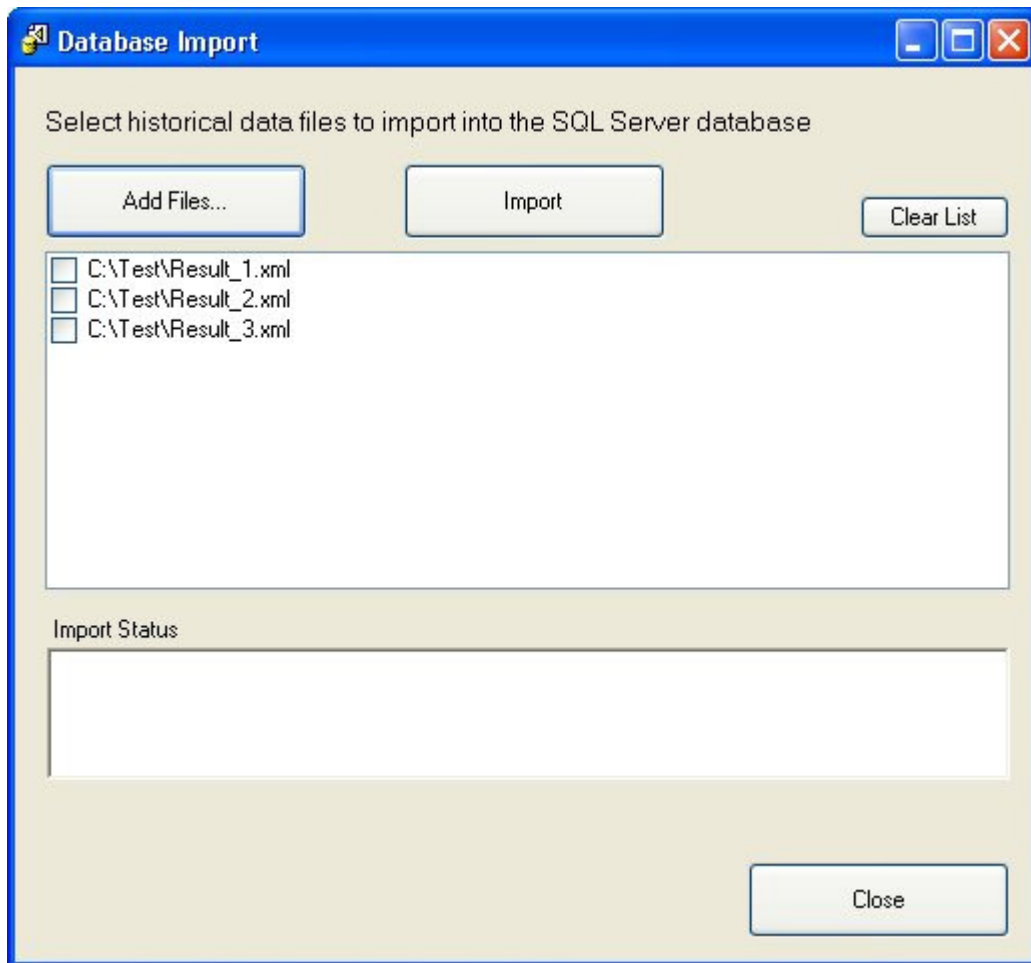
Database Import is used to manually select files for import into the Topos SQL Server database. Database Import is a separately installed, standalone application that is launched from the Start Menu at.

All Programs->Topos Technologies->Instrument Imports...

The Database Import application does not need the File Monitor Service to run; however, it shares the database connection parameters and Service Identifier that are setup as part of the Service settings. Therefore, the Database Import application must be installed on the same PC as the Service. In most cases the database connection parameters are installed with the correct values when the Service is installed and should not have to be modified.

Database Import

When the application is run, the following dialog will be displayed, which allows you to select files to import:



Add Files

Select this button to choose files to import. You may select it multiple times and choose files from different directories. The file type should match the type that is typically monitored by the service.

Clear List

Select this button to clear the import files list. Clear a completed list in order to import new files.

Import

Select this button to start importing each file in the import file list. As each file is successfully imported it will be checked off. In addition, a progress bar monitors the overall progress of all files.

Abort / Continue Importing

Once import has begun, and there is more than one file to import, the button changes to **Abort**. If aborted, the process will end after the current file has finished importing. If the process was aborted or terminated prematurely for any reason (e.g. an error occurred) there will be a partial number of the files checked and the Abort button will change to **Continue Importing**. Continue will continue to import the items that have not yet been imported.

Error Handling

Should an error occur during importing a file, the process will be interrupted and a detailed error message will be displayed in the Import Status window. Errors are rare, but may be due to unexpected file parsing problems or SQL Server connection dropouts. If you continue importing after getting an error on a file, that file will be skipped.