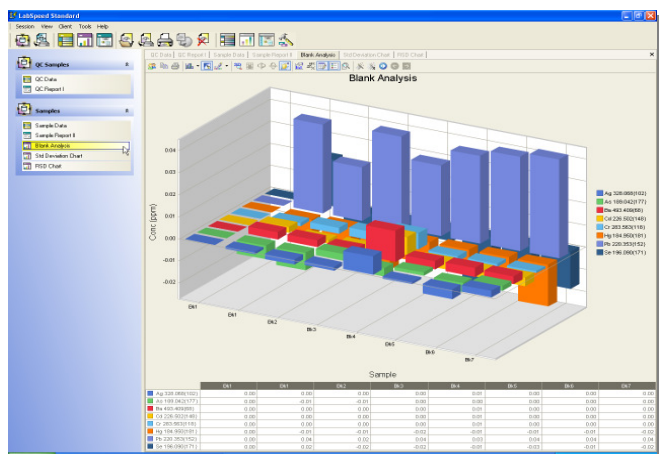


## LabSpeed™ Data Management Software

For All Data Validation, Limit Checking, Data Transfer, Data Monitoring, Process Control (SPC), Auto-Printing, Auto-Exporting, LIMS Connectivity, Reporting, Trend Analysis and Data Sharing Requirements in a Laboratory



**Apply Limit Checks and Perform Data Validation.** Evaluate any numeric value in the instrument data results against multiple low and high limits. Color code table columns and create pass/fail reports. Associate a list of limits to add limit lines to each plotted series. For example, you could check the average elemental results against multiple low and high limits and simultaneously check the %RSD against a single high limit. Use this feature for process monitoring, EPA quality checking, Metal alloy determination, RoHS regulation warnings or any other data checking scenario your lab requires.

LabSpeed™ provides a common platform for data validation, process monitoring, automated printing and exporting, charting, reporting and sharing results generated from all types of instruments used for elemental analysis, from handheld XRF analyzers to multi-element ICP and Spark spectrometers. LabSpeed connects directly to the instrument's native database or saved file. Specific knowledge of saved instrument data formats is not necessary allowing access to laboratory information easier than it has ever been before.

Sample Name	Acquire Date	Sample Type	Element	Display Average	RSD	RSD Status	Avg Status
Water-1	5/2/2006 3:37:20 PM	Unknown	As	8.990	0.34316361300	Pass	Pass
Water-1	5/2/2006 3:37:20 PM	Unknown	Ca	6.296	0.79142214206	Pass	Pass
Water-1	5/2/2006 3:37:20 PM	Unknown	Cu	1.632	0.72181047902	Pass	Pass
Water-1	5/2/2006 3:37:20 PM	Unknown	Hg	1.594	0.30001736695	Pass	Pass
Water-1	5/2/2006 3:37:20 PM	Unknown	K	30.34	0.65908514604	Pass	Pass
Water-1	5/2/2006 3:37:20 PM	Unknown	Mg	10.937	0.74206222903	Pass	Pass
Water-1	5/2/2006 3:37:20 PM	Unknown	Na	30.12	0.90003000006	Fail High	Fail High
Water-1	5/2/2006 3:37:20 PM	Unknown	Na	29.94	0.70275028034	Pass	Fail High
Water-1	5/2/2006 3:37:20 PM	Unknown	Pb	31.22	0.65947660296	Pass	Pass
Water-1	5/2/2006 3:37:20 PM	Unknown	Pb	31.15	0.671619146292	Pass	Pass
Water-1	5/2/2006 3:37:20 PM	Unknown	S	22.86	0.56252704704	Pass	Not Checked
Water-1	5/2/2006 3:37:20 PM	Unknown	S	22.62	0.63064962273	Pass	Not Checked
Water-1	5/2/2006 3:37:20 PM	Unknown	Zn	1.607	0.40688482628	Pass	Pass
Water-2	5/2/2006 3:37:20 PM	Unknown	As	4.992	0.59025196220	Pass	Pass
Water-2	5/2/2006 3:37:20 PM	Unknown	Ca	6.315	0.21899589178	Pass	Pass
Water-2	5/2/2006 3:37:20 PM	Unknown	Cu	6.374	0.90793285995	Fail High	Pass
Water-2	5/2/2006 3:37:20 PM	Unknown	Cu	3.632	0.24775305290	Pass	Pass
Water-2	5/2/2006 3:37:20 PM	Unknown	Hg	1.503	0.46388998993	Pass	Pass
Water-2	5/2/2006 3:37:20 PM	Unknown	K	20.46	0.47482730912	Pass	Pass
Water-2	5/2/2006 3:37:20 PM	Unknown	Mg	10.96	0.70111111111	Fail High	Pass
Water-2	5/2/2006 3:37:20 PM	Unknown	Na	30.24	0.94076251504	Fail High	Fail High
Water-2	5/2/2006 3:37:20 PM	Unknown	Na	29.77	0.48932073645	Pass	Fail High
Water-2	5/2/2006 3:37:20 PM	Unknown	Pb	31.40	0.60381595448	Pass	Pass

The screenshot shows a 'Monitor is Running' window. It includes a 'Stop' button and a 'Monitor Summary' section with the following fields:

- Monitor Start Time: 4/30/2008 12:55:18 PM
- Time of Last Data: 4/30/2008 12:56:06 PM
- Sample Count Since Last Start: 4
- Last Data Count: 1

Below this is a 'Last Sample Info' section:

- Sample ID: 59
- Sample Name: SS 316 - 4
- Acquired Date: 5/12/2007 12:27:43 AM
- Method: 3003

At the bottom, there is an 'Automated Output Status' section with details about report generation.

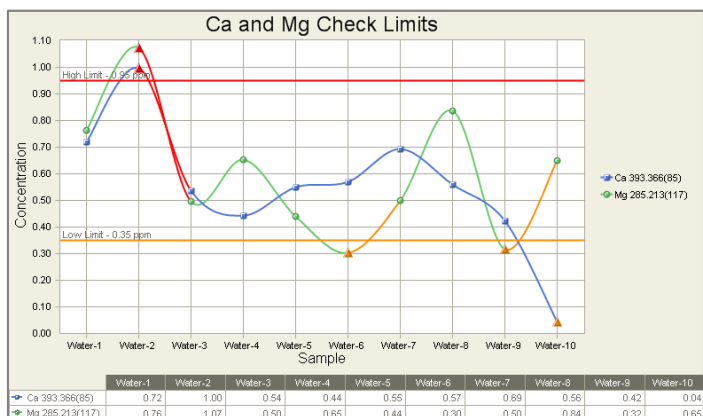
**Automate Printing and Exporting to Multiple Destinations.** LabSpeed™ includes a Monitor Mode for detecting new samples recently saved to the database. Samples can be filtered that match specific user criteria and automatically printed to multiple printers and exported to multiple destinations. The user has complete control over the format of the printout and exported file and can even print or export a different format to different locations. Multiple samples per page can be printed to save paper.

Connect to LIMS, ERP, Excel, ELN and other Third-Party Packages. Define the layout, field names and data contents for export to ERP and third-party software packages using LabSpeed™'s unique drag & drop table-builder view. In a few minutes, you can create a tabular export format to conform to virtually any import requirement. Save for reviewing new data and exporting on a regular basis, such as to a LIMS System.

Export Now...

Exported to: 'C:\Topsis Technologies\LabSpeed Data\DiaDatabase\Export Files\foo.txt' on Wednesday, April 30, 2008 at 11:52:37 AM

Table (RptResults)							
SampleNo	AcquireDate	Method	Al %	Cr %	Cu %	Fe %	
richey 6307	1/29/2007 7:59:05 PM	Al100	96.9137	<0.001	<0.01	0.1374	
richey 6299	1/29/2007 8:02:22 PM	Al100	96.0498	0.0018	<0.01	0.144	
H4 STD	1/29/2007 8:11:08 PM	Al100	90.0262	0.3464	0.6822	0.2136	
H7 STD	1/29/2007 8:17:59 PM	Al100	90.452	0.0829	1.9521	0.8301	
6307 richey	1/29/2007 8:31:46 PM	Al100	97.0303	<0.001	<0.01	0.1288	
6307 richey	1/29/2007 8:35:35 PM	Al100	96.0131	0.0017	<0.01	0.1364	
SS 6061	4/20/2007 9:19:35 PM	Al100	97.2321	0.2297	0.3076	0.3462	
SS 319 FZ	4/20/2007 9:29:17 PM	Al100	87.5779	0.0116	3.7698	0.846	
SS 356MH	4/20/2007 9:38:20 PM	Al100	91.7739	0.0015	0.1165	0.345	
SS 380 FH	4/20/2007 9:45:16 PM	Al100	82.7414	0.0103	3.2091	0.9254	



Analyze Trends and Relationships. Drag & drop to create sophisticated 2-D and 3-D rotating charts to analyze relationships in the data. All standard chart types are supported including bar, line and pie (and 9 others) with optional data smoothing. Analyze trends using date-times or elapsed time intervals. Add "check" limits to a plot to quickly identify points that are out of spec.

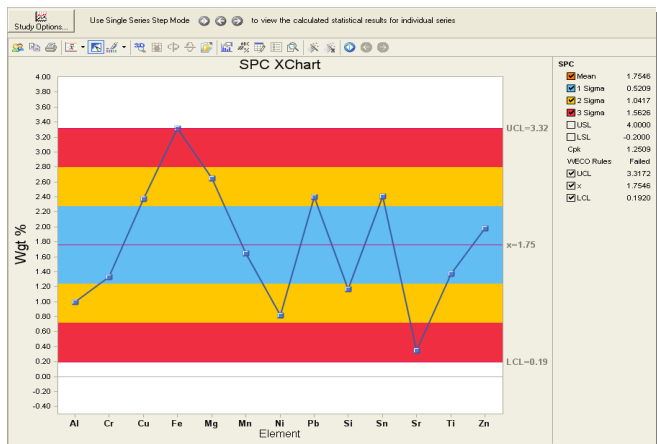
Create Custom Reports. LabSpeed™ includes a unique reporting engine that hides the complexity of data relationships, which is common in instrument data. Simply drag & drop to create specialized reports with your own company logo and information layout. Create sophisticated reports for customers or create simple printouts for the foundry floor. Quickly modify existing reports.

LabSpeed Sample Report  
4/30/2008 2:35:16 PM

**Alloy Analysis**

6/12/2007 12:24:46 AM Concentration

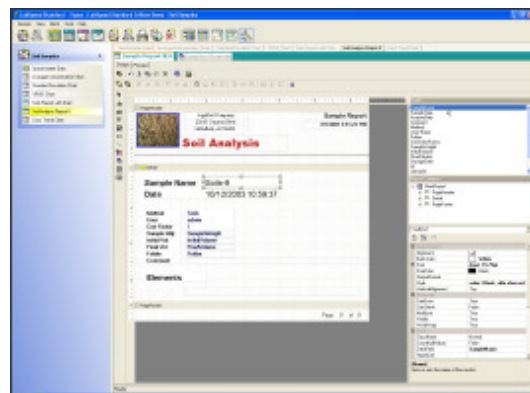
Method	Al100	Element Name	Average	Units
User		Al	58.7624	%
Quality	213	Cr	0.5000	%
QualiVer	1	Cu	8.3198	%
QualiChk	T	Fe	~ { 3.5640	%
QualiOK	F	Mg	0.6809	%
		Mn	0.4119	%
		Ni	~ 4.0480	%
		Pb	1.0000	%
		Si	} 18.9915	%
		Sn	1.0000	%
		Sr	0.1500	%
		Ti	0.5000	%
		Zn	2.0715	%



Perform Statistical Process Control (SPC) With LabSpeed™'s SPC charts, a quality engineer can apply standard statistical analysis techniques to monitor a process and determine if it is in control or out of control. XCharts and RCharts can be displayed along with the Process Capability Index (Cpk) and WECO rules result. SPC allows for early detection and prevention of problems in a process, which can lead to a significant reduction in the time required to produce a product or service.

Apply Calculations using Instrument data. With LabSpeed™'s powerful Formula-Builder, apply corrections, perform conversions, change data formats and add new data columns to existing instrument results. Use this feature to apply weight and dilution corrections, or report results as different species, such as Ca as CaCO<sub>3</sub>. Perform math, logical, statistical and string operations to display and export what your organization needs.

Create New Charts, Reports, Tables and Export Formats Effortlessly. LabSpeed™'s drag & drop View Designers allow you to quickly create new Charts, Reports and Tables or modify existing ones.



## Use LabSpeed™ To

- Create fully customizable limit tables and correction tables
- Apply limit checking and data validation
- Create custom reports for in-house use or to send to customers
- Monitor database, Auto-print and Auto-export to multiple destinations
- Apply calculations using instrument data
- Perform Statistical Process Control
- Apply Significant figures to results
- Browse and review historical data
- Transfer data to ERP, LIMS, Excel, ELN and other applications
- Share data and views with colleagues
- Analyze trends and relationships
- And more...